



MONTHLY MEMBERSHIP PROGRESS REPORT

District 202 J

Results as of: 07/31/2018

GMT: CLIFFORD HEYWOOD

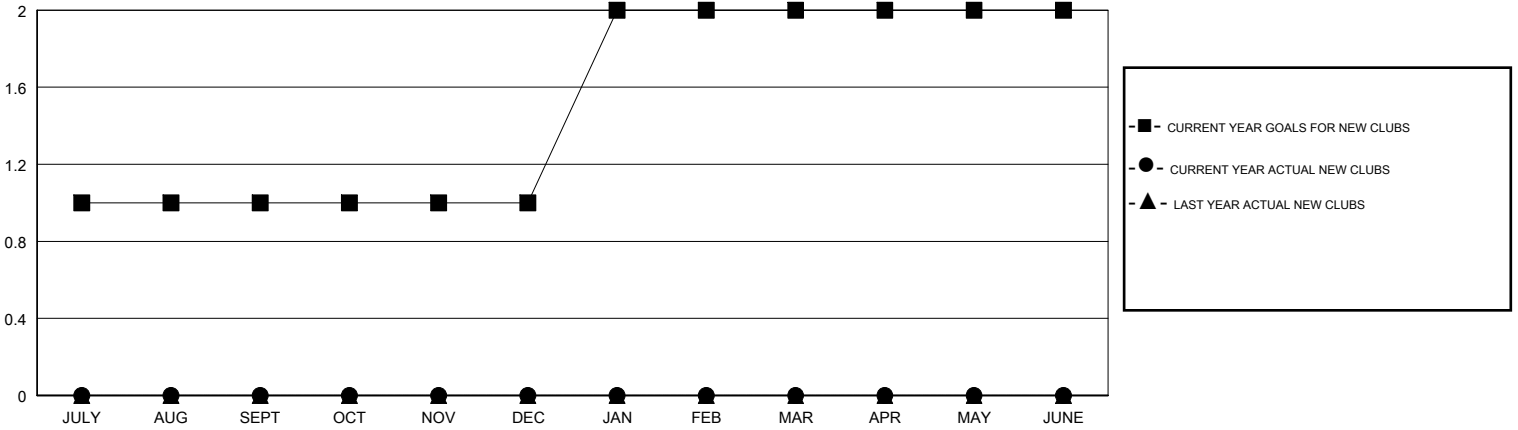
LOCATION NEW ZEALAND

GMT CA

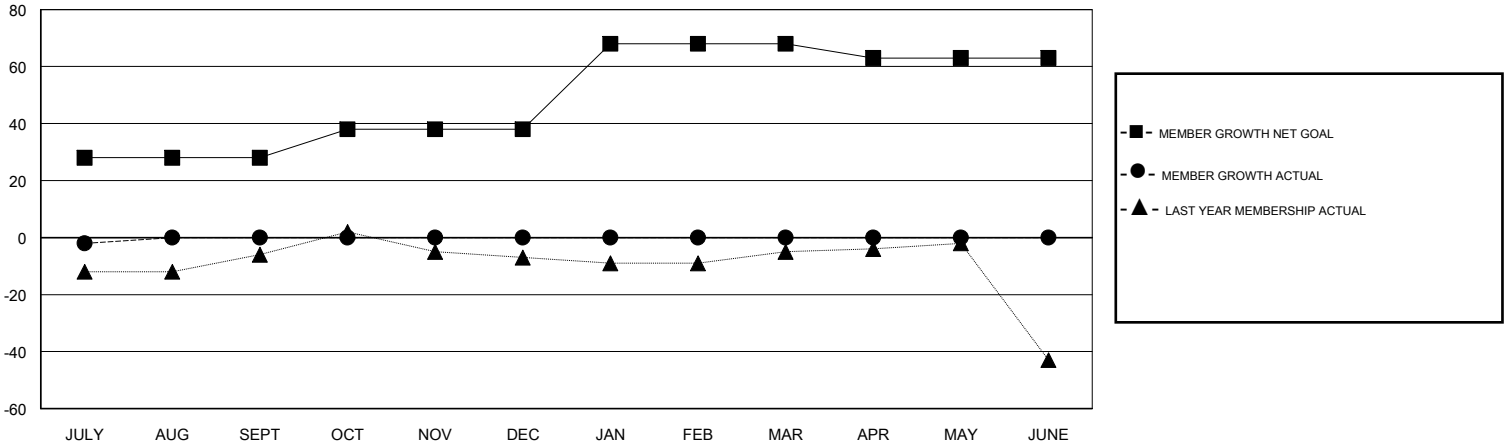
Clubs			
RESULTS FOR 2018-2019			
QUARTER	NEW CLUB GOAL	NEW CLUBS	DROPPED CLUBS
JULY/AUG/SEPT	1	0	1
OCT/NOV/DEC	0	0	0
JAN/FEB/MAR	1	0	0
APR/MAY/JUNE	0	0	0

Members			
RESULTS FOR 2018-2019			
QUARTER	MEMBER GROWTH NET GOAL	MEMBER GROWTH ACTUAL	DROPPED MEMBERS ACTUAL (including transfers)
JULY/AUG/SEPT	28	9	7
OCT/NOV/DEC	10	0	0
JAN/FEB/MAR	30	0	0
APR/MAY/JUNE	-5	0	0

GOALS AND ACTUAL NEW CLUBS CUMULATIVE



GOALS AND ACTUAL MEMBERS CUMULATIVE



DROPPED CLUBS: 1	3 CLUBS OF 38 ADDED 1 OR MORE NEW MEMBERS	<u>GENDER DISTRIBUTION</u>	
DROPPED MEMBERS		MALE	960 (77.17%)
DECEASED	1	FEMALE	284 (22.83%)
CLUB CANCELLED	0	Women Percentage Fiscal Year Goal: 25%	
OTHER	6	TOTAL FAMILY UNIT MEMBERS	46
TOTAL	7	FAMILY MEMBERS PAYING HALF DUES	23

[CLICK HERE FOR CUMULATIVE MEMBERSHIP DATA](#)